

MOLECULAR DIAGNOSTICS

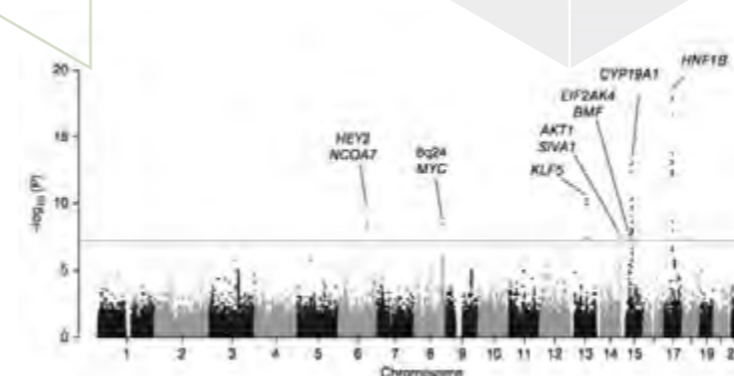


Principal Investigator

Dr. Timothy Cheng

Research Progress Summary

During his doctoral studies, Dr. Timothy Cheng conducted research on the genetic predisposition to endometrial and colorectal cancer. He is currently pursuing research on cell-free nucleic acids in plasma and urine.



The identification of five novel genetic loci associated with endometrial cancer risk. The y-axis shows the significance, and risk loci surpassing genome-wide significance are annotated.

The figure was published by Nature Genetics
Copyright© 2016 Cheng et al.

Characterisation of the chromosome 13q22 endometrial cancer risk locus. The epigenetic landscape suggests that the risk SNP is in a region of open chromatin. Further functional analyses suggest that the risk allele interacts with the nearby KLF5 promoter to cause increased expression.

The figure was published by Nature Genetics
Copyright ©2016 Cheng et al.

